

Fishers Canyon Open Space Master Plan Neighborhood Site Tour - August 7, 2024 Recreation & Access Voting+Worksheet Engagement Summary



OVERVIEW: On August 7, 2024, over 70 neighbors and their families from the surrounding Fishers Canyon Open Space community participated in a tour of three potential parking and access options off of Wellfleet Street.

During the April 2024 public meeting, many neighbors expressed concerns about the access to the property off of a residential street. The planning team convened this neighborhood tour (for residents who will be directly impacted by traffic and access) to address those concerns and learn more about how to balance concerns with visions for passive recreation access. The event was publicized through yard signs and direct emails to neighbors and HOA liaisons.

Colorado Springs Parks, Recreation and Cultural Services staff led four small groups on 20-minute tours and then participants completed paper surveys and a voting exercise on the three parking/access areas they toured. Those results are captured in this engagement summary.

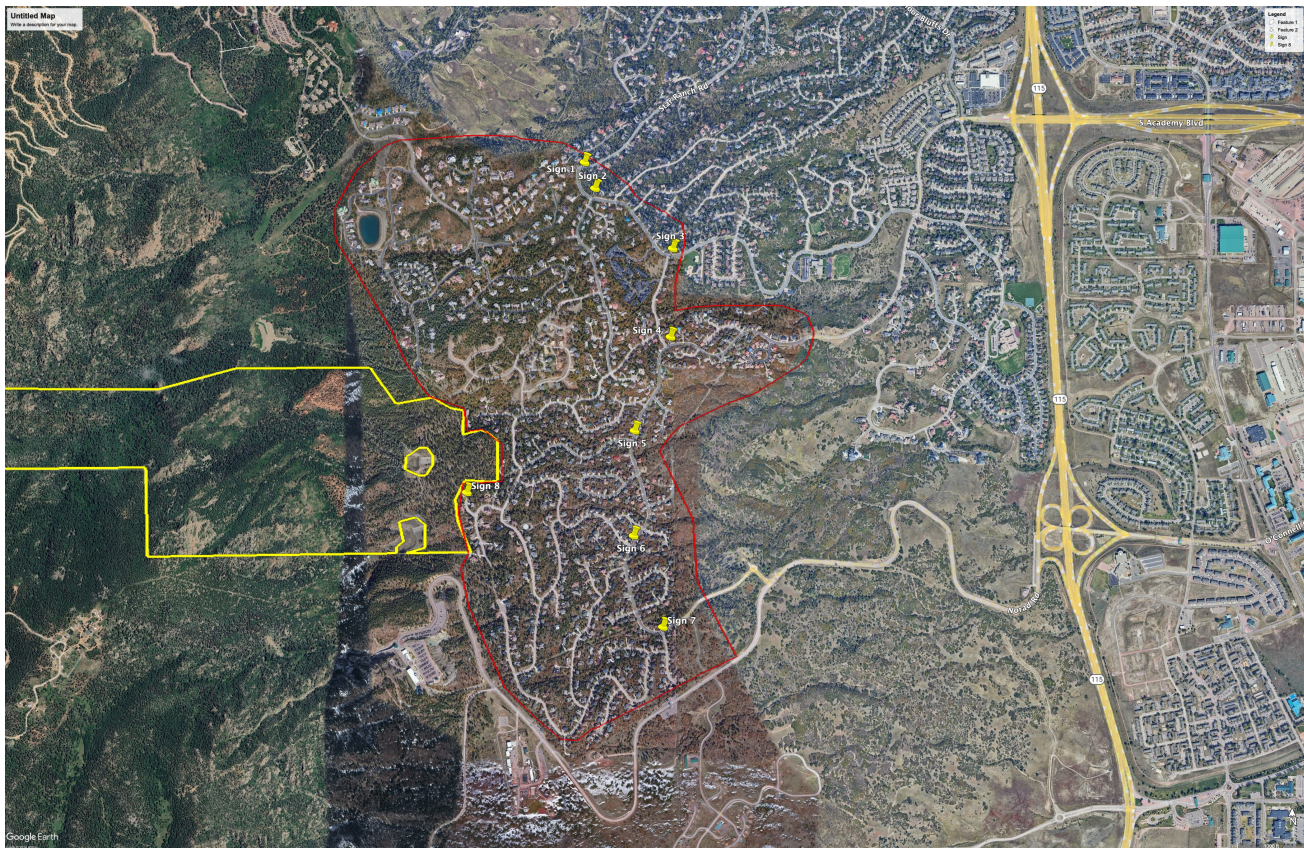


Image above shows Fishers Canyon Open Space property line in yellow. The red polygon represents the neighborhood site tour invitation catchment area through project list emails with the yellow pins indicating intersections for yard-signs with QR code tour sign-up instructions.

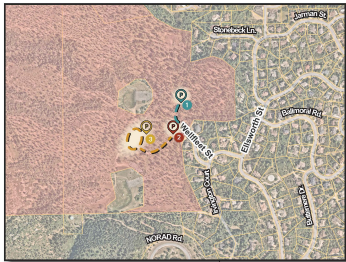
FISHERS CANYON

Open Space Master Plan

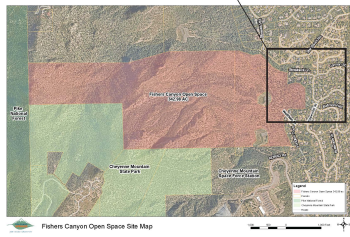
NEIGHBORHOOD PREFERENCE: TRAILHEAD PARKING BUFFERS

Place the dot vote for your preferred option in one of the boxes below.

REFERENCE MAP



P = Potential Parking Zone



According to community survey #2 results, the majority of participants from the 80906 zip code selected "Day only, gated access to parking lot within open space property," as their top parking access management strategy.



Fishers Canyon Open Space Master Plan Management Plan

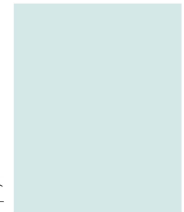
JAN 12, 2022 Neighborhood IDB Post

Trailhead Parking Buffer Option #1 Conceptual Section

~ 200' - 300'
Buffer from Parking
to Property Line

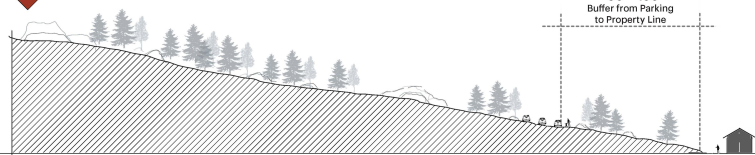


Option #1

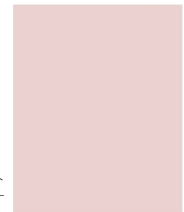


Trailhead Parking Buffer Option #2 Conceptual Section

~ 50' - 150'
Buffer from Parking
to Property Line

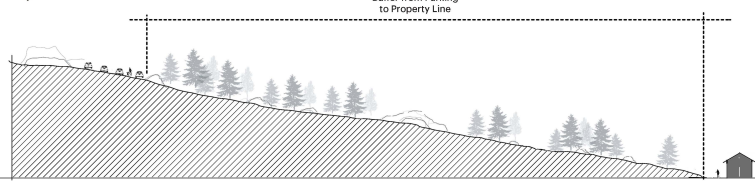


Option #2



Trailhead Parking Buffer Option #3 Conceptual Section

~ 400' - 600'
Buffer from Parking
to Property Line



Option #3



Image above shows the map of the three potential trailhead access areas with attendant parking buffer conceptual sections. Participants toured each area and then used a dot to vote for their preference. Participants also filled out a paper survey to understand their values, desired passive recreation amenities and future visitation use. Results from poster voting and paper surveys are collated on the following pages.

Q1 - What are your core values for Fishers Canyon Open Space? Open space is important to me because it...(Select all that apply) - Selected Choice

56 Responses



- • Preserves natural areas for plants and wildlife. [26%]
- • Provides passive (non-motorized) recreation access. [23%]
- • Can be managed and maintained to reduce risk of wildfire. [23%]
- • Preserves scenic views. [23%]
- • Other [6%]

Q1 Other - Text

10 Responses

- Other - Text

Preserve tranquility of neighborhood.

Controlled access to preserve neighborhood

Connecting trails, easy accessibility

Absolutely against parking this is an expensive neighborhood your inviting crime.

Provides hiking and biking

I would like to see an off-leash area for dogs.

Allows connections to longer trails.

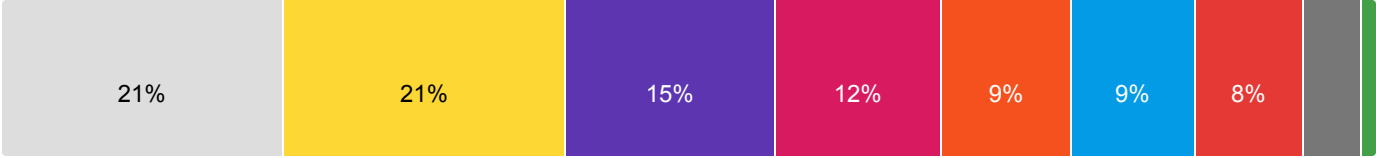
None

Hiking and recreation

Hiking only trails - allow dogs

Q2 - What types of trail experiences would you like to see in the Fishers Canyon Open Space Master Plan? (Check all that apply) - Selected Choice

57 Responses



- Trails to connect to regional trails and destinations (e.g., Chamberlain Trail, Cheye... [21%]
- Trails to scenic views. [21%]
- Loops and trails to walk on-leash dog-walking. [15%]
- Nature trails. [12%]
- Trails to bouldering or rock-climbing. [9%]
- Trails for mountain biking. [9%]
- Low-slope trail loops for daily exercise that can be accessed by people with mobility... [8%]
- Other [4%]
- Trails for horseback riding. [1%]

Q2 - Other - Text

8 Responses

Other - Text

No access on Wellfleet/Irvington other than emergency vehicles only

Least disturbance - perfect as is.

None

Off leash area for dogs

Forest service McNeil Trail

No dogs! No horses!

Single use trails for hiking (i.e., no biking on hiking trails)

Single use trails. No horse trailer parking.

Q3 - What types of site amenities are the highest priority for you at Fishes Canyon Open Space? (Select all that apply) - Selected Choice

53 Responses



- Trash Receptacles [28%]
- Dog waste receptacles [24%]
- Native plant revegetation and pollinator habitat (e.g., monarch butterfly) [18%]
- Parking [12%]
- Other [9%]
- Picnic Tables and benches [7%]
- Bike Racks [2%]

Q3 - Other - Text

12 Responses

Other - Text

Parking in other areas, buy some property to spread the pain.

Request multiple dog waste receptacles.

No picnic tables!!!

Restrooms

No parking

Bathroom

Outhouses.

Restrooms

Toilet facilities

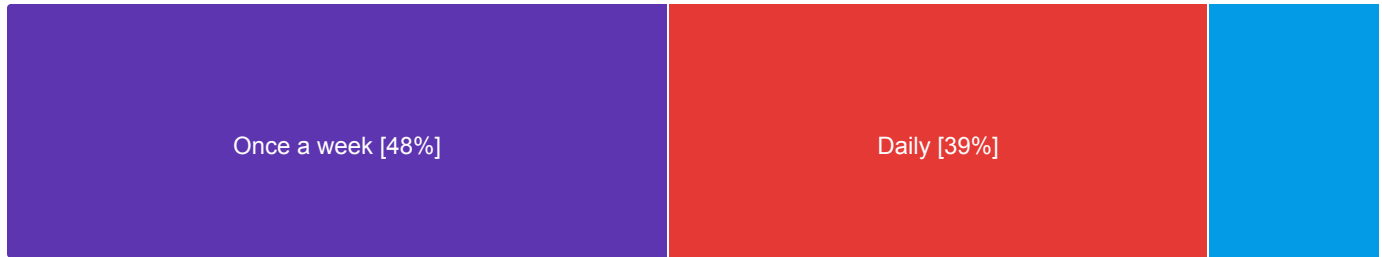
Use other access! Parking /cars will ruin our neighborhood.

Limited parking on-site (option 1 parking lot size)

Limited parking - size of option 1

Q4 - How often would you likely access Fishers Canyon Open Space?

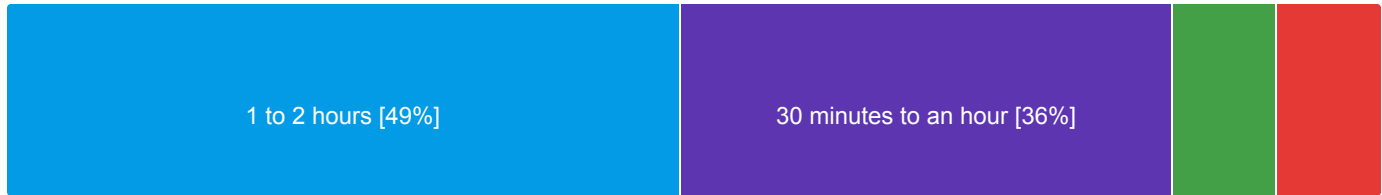
56 Responses



Once a week [48%] Daily [39%] Once a month [13%] One to two times a year [0%]

Q5 - How much time would you estimate you would spend during a visit to Fishers Canyon Open Space? (Select one)

53 Responses



1 to 2 hours [49%] 30 minutes to an hour [36%] 2 or more hours [8%] 30 minutes or less [8%]

Q6 - How would you most likely access Fishers Canyon Open Space from the neighborhood? (Select one) - Selected Choice

53 Responses



Walk to trailhead [62%] Bike to trailhead [21%] Drive and park at trailhead [15%]
Access Fishers Canyon from regional connection [2%] Other [0%]

Q7 - Are there any other suggestions you have for the planning team to consider as part of the Fishers Canyon Open Space Master and Management plan?

35 Responses

7. Are there any other suggestions you have for the planning team to consider as part of the Fishers Canyon Open Space Master and Management plan?

Limit parking to emergency access only. Talk to Space Force 21CC Commander to grant access across NORAD Road. Gain access to zoo with money to offset very limited parking.

I already emailed David my concerns.

Parking on street is hazardous in winter.

1 Determine primary usage. 2 Determine carrying capacity. 3 Park for carrying capacity. 4. Parking enforcement and traffic plan for speeding.

Parking area. 3 is best option

Speed bumps on Ellsworth. Parking at site 3. Permit parking for residents.

I would like to volunteer to help with trail building.

Star Ranch pedestrian access.

Please preserve the nature. Minimize impact to neighborhood. No horses! Make park closable at night and during high fire risks.

Mitigating automobile traffic through the neighborhood is important. Less vehicles the better. Nice to have open space. No one really wants automobiles or trailers.

Locked gate. Since water would flow from gate down Wellfleet, so would horse poop and other things. #3 parking area to keep away from view of neighbors. Fire is a concern. Teenagers camping in debris flow ponds and under areas with tiki torches and booze. Need patrols.

Without sufficient parking, people will park in the neighborhood, even if it's by permit only so having enough parking is a must. I like the idea of a gate in the evening but don't think it will make a material difference. People will leave at night as a general rule anyway. Troublemakers will cause trouble regardless of a. Gate. Lot 3 seems a much better option because of the space and distance from the homes. I would discourage horse trailers. I would love the opportunity to volunteer during construction of the trails, etc.

A gate to close the park at night. Easy access if there is a fire.

Gated access. Ticket overnight parking. Start small and add more parking as time goes (like option 3).

Reservation system for parking, fencing needs to restrict ability for public to enter a neighbor's yard.

Move parking area to the flat open area next to BRC resort community - north side of entrance.

Parking lot to be directly straight through the gate n area closest to BRC.

Parking lots in multi-million dollar neighborhoods is horrible. Increasing traffic, inviting crime, increasing wildlife risk.

Get it done. You will never please everyone! Let's get some great hikes from our neighborhood area.

Limit access to a specific number.

I truly wish we come out with a plan to MINIMIZE the impact to nature, leave MINIMUM trace to the open space. Regardless of which plan, I wish we leave sufficient space to the animals and the nature. Please!

Allow access for dogs.

No horses, the footprint is not big enough to justify those trucks/trailers coming up here.

Don't allow parking reservations. Install speed bumps on main road.

Limit parking to promote more natural access.

Speed bumps between trail head and Safeway.

I will not vote for parking site one but if it is voted as the parking site, we would like to see it moved a little farther north (there is a large boulder north on the other side of that.) As we are very near the forest and will see the cars parked, but if they are beyond the border and small ridge, we wouldn't see the parked cars. Thank you!

I like the idea of parking lot (3) and gated cul de sac

Concern about traffic on Ellsworth. Please consider possibility of 3-way stops.

Thanks for keeping an open mind and making it happen! Always concerned about wildfire, nice job on mitigation. Parking will not please everyone, would like to see restrictions on "on-street" parking-limit to residents.

Gated and no parking on neighborhood streets. A lot of noxious weeds have taken over the neighborhood behind Irvington Ct. after the trees were taken out. I hope this is addressed. Signs for packing out trash and dog waste.

Bike access (I am local, otherwise I would use regional trail connection). Trail use depends on trails and interconnectivity to other trail systems. More trails and access to other trails would increase my usage. It is breathtaking and would be an asset to our open space system. I cannot wait until it is open. I hope it does not take too much time.

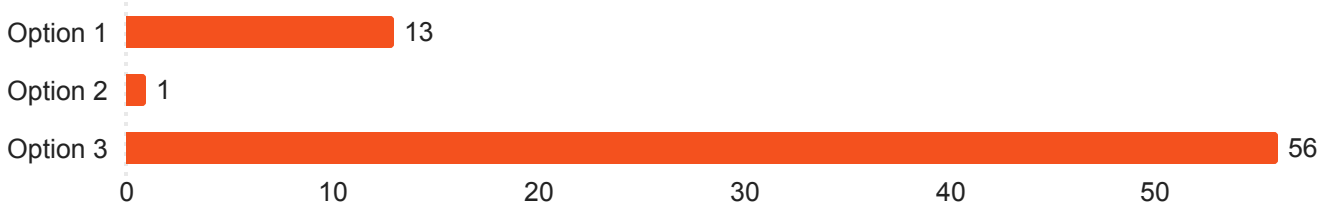
Spread the parking burden with the zoo and possibly Cheyenne Mountain State Park.

Single use trails - separate biking from hiking. Smaller parking lot at option #3 location.

Would prefer parking buffer option #3 but to make it the size of parking option #1.

Q8 - Which parking option would you prefer? *Reference image on page 3 of engagement report for option location and conceptual sections.*

70 Responses



Q9_3 - Which overarching parking strategy do you prefer?

67 Responses

Choice Count

