

VALLEY HI

NEIGHBORHOOD TRAFFIC MANAGEMENT PROGRAM



Todd Frisbie, City Traffic Engineer
Colleen Guillotte, Engineer III
Theresa Randall, Planner I

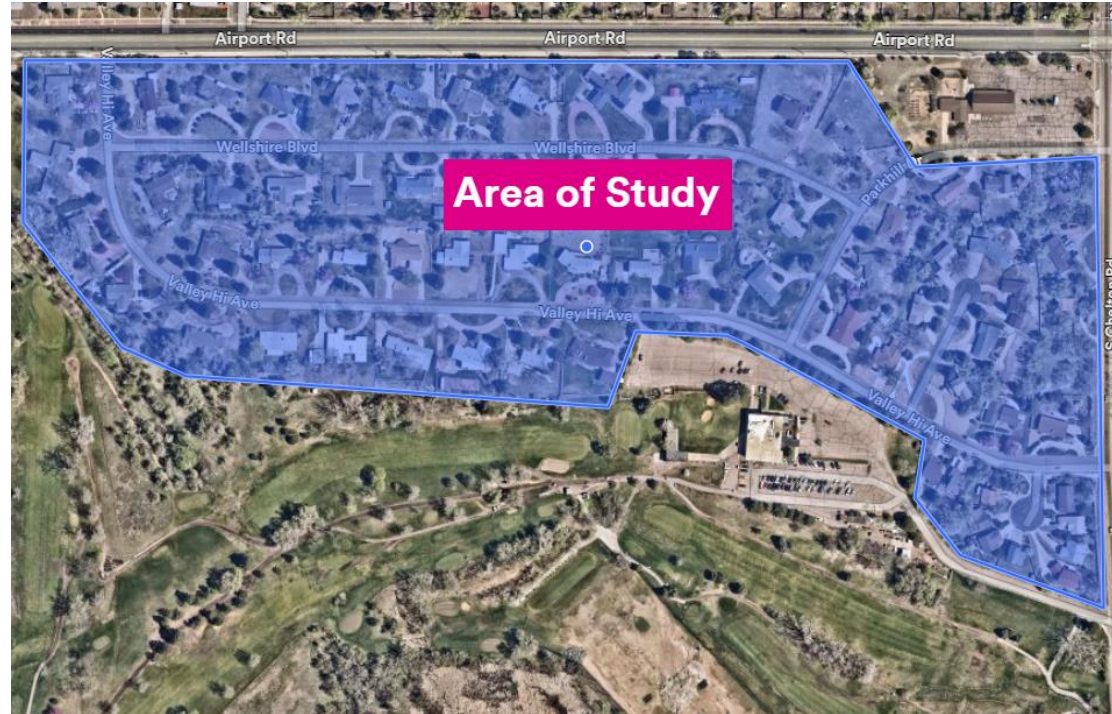
June 27th, 2024

Public Works: Traffic Engineering Division

WELCOME & OVERVIEW



- Introduction
- Traffic Calming
- Data Capture
- Potential Treatment
- Discussion
- Next Steps



WHAT IS TRAFFIC CALMING?

Traffic Calming – a combination of *‘self-enforcing’* treatments that reduce the negative effects of vehicle speeds

BROAD TRAFFIC CALMING GOALS:

- Increasing the quality of life;
- Incorporating the preferences and requirements of the people using the area (e.g., working, playing, residing) along the street(s), or at intersection(s);
- Creating safe and attractive neighborhoods;
- Helping to reduce the negative effects of motor vehicles on the environment (e.g., pollution); and/or
- Promoting pedestrian, bicycle & transit use.

Source: ITE website: <https://www.ite.org/technical-resources/traffic-calming/>



Speed Hump

SPEED REDUCTION: -6 TO -8 MPH
REDUCTION FACTOR: HIGH

AKA: SPEED CUSHION

Elongated mound in roadway, perpendicular to traffic flow, that uses vertical deflection to slow motorists. Typically 12' to 14' in depth depending upon speed and volume. Typical spacing of 300' to 500'.

TYPICAL DIMENSION RANGE

- A 6' - 7' } NOT speed bumps!
- B 12' - 14' }
- C 3" - 4"
- D Lane Width
- E Pavement width

Alternate: Offset speed cushions are an option to allow emergency service vehicles to pass over / around, and minimize delay.



SPEED

45 mph Posted Speeds up to 45 MPH

TRAFFIC & VOLUME

(Low - Moderate)

ROUTE TYPES (ADDITIONAL CONSIDERATIONS)

Truck X Transit X Steep Grades X

COST

(Low)

ADVANTAGES

- No impact to bike safety
- Volume reductions up to 20%
- Cushion variation accommodates emergency, transit

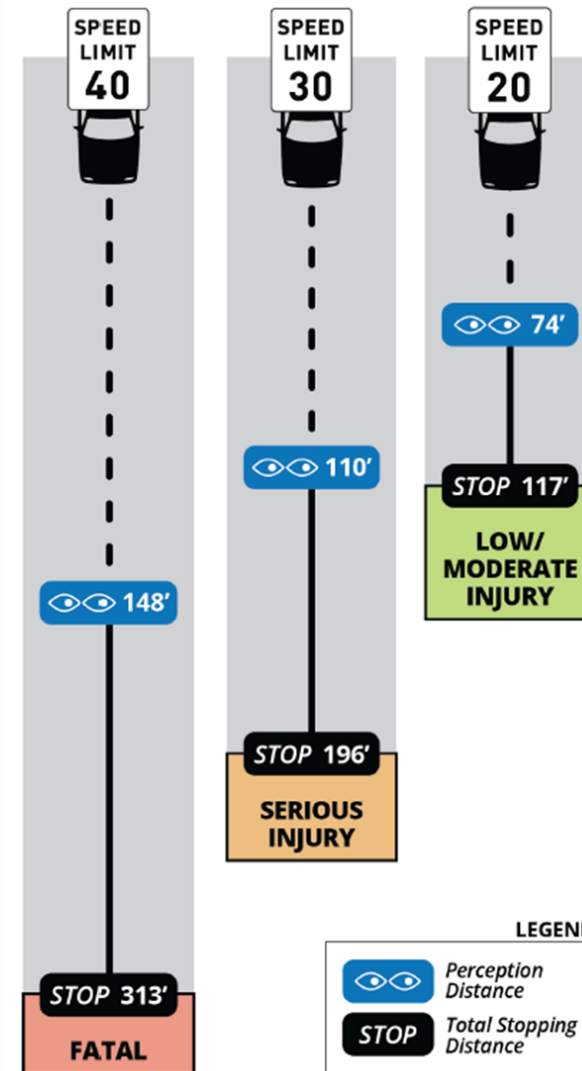
DISADVANTAGES

- Noise levels (acceleration after passing over)
- Damage from snow plows (winter)
- Little effect as singular treatment

Why is Speed Reduction Important?

Peripheral vision and ability to react are impacted by vehicle speed

Critical for adequate stopping distance to avoid a crash



GENERAL PROCESS

1. **Screening:** Submitted through GoCOS! App or phone call
2. **Diagnosis:** Confirmation with data
3. **Support & Selection**
 - **Quick Fix** projects proceed internally, without public meeting
 - **Capital Projects** support from neighborhood is necessary
4. **Evaluation:** implementation and evaluate effectiveness over time

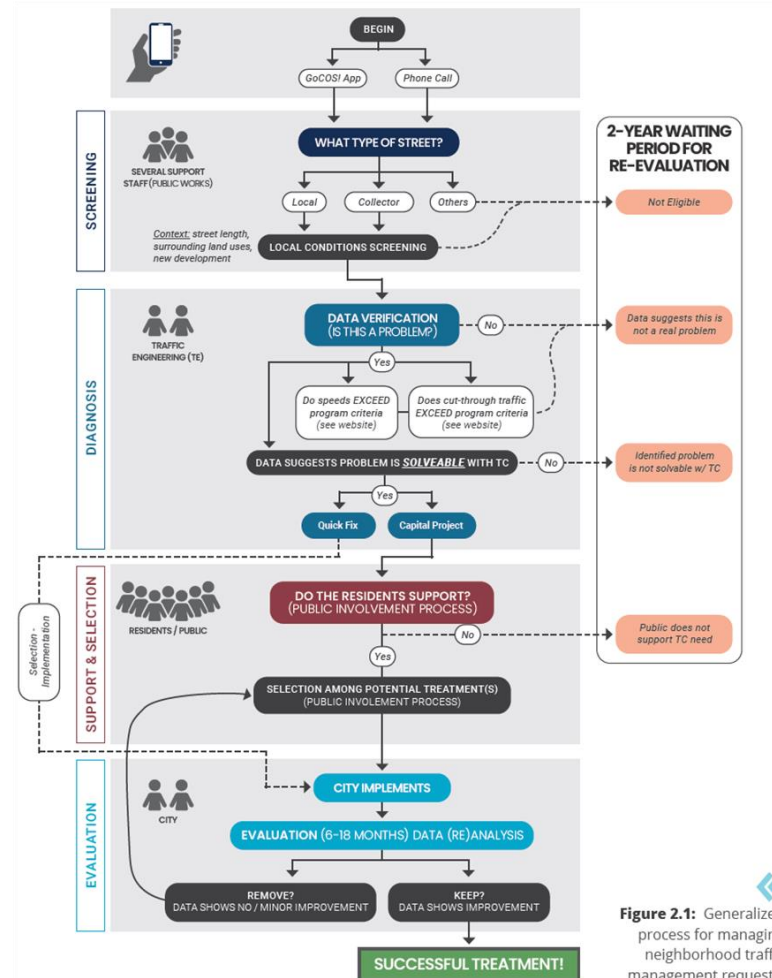


Figure 2.1: Generalized process for managing neighborhood traffic management requests.

How do we submit a Traffic Calming request?

Use the GoCOS! App



Report and track issues, request a service, contact the City

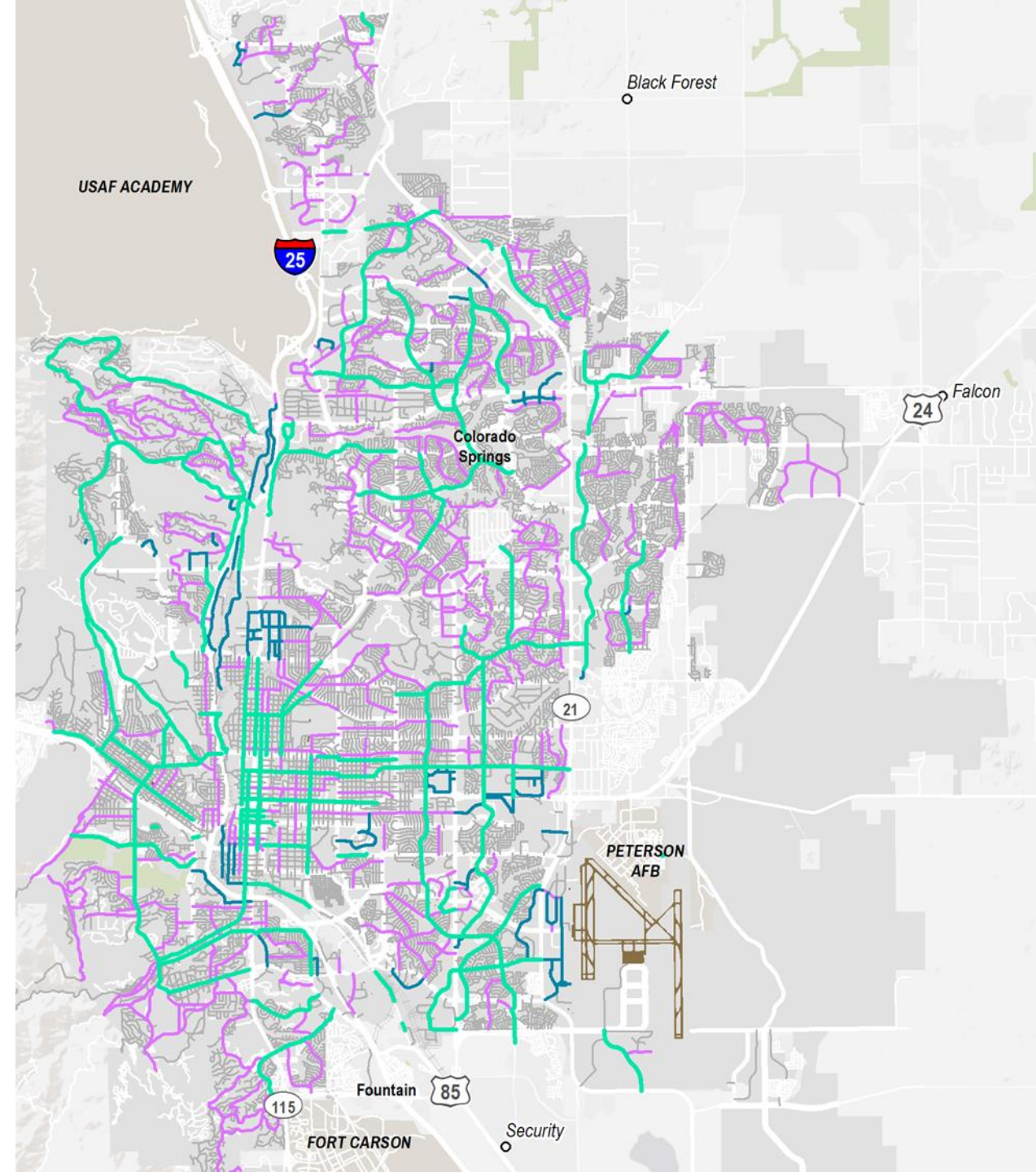
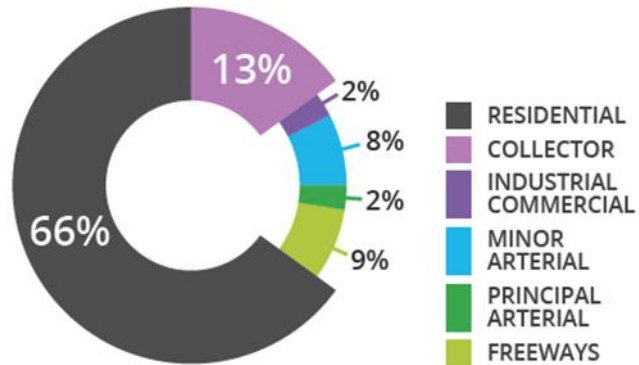
[Get Started](#)

A screenshot of the GoCOS! web application interface. At the top, the GoCOS! logo is visible. The main heading is "Traffic Issues" with the subtext "Tell us more about the issue:". Below this is a form with several sections: "Address (required)" with a text input field and a red error message "That address is outside the jurisdiction of GoCOS!. Please enter an address within the boundaries."; "Traffic & Transportation Requests (required)" with a dropdown menu currently set to "Neighborhood traffic calming -"; "Phone Number (optional)" with a text input field and a note "Please provide your preferred phone number."; "Description (required)" with a text input field containing the placeholder "Anything else we should know about the issue?"; and an "Add a photo" button. At the bottom of the form is a map of Colorado Springs, Colorado, with "Map" and "Satellite" tabs. The map shows the city's boundaries and various landmarks. To the right of the map are "Cancel" and "Submit" buttons.

Street Types

Not all roads are eligible for traffic calming

	Street Type	Color	Miles
	Freeway / Expressway / Parkway		32
City-maintained	Principal Arterial		159
	Minor Arterial	Green	144
	Industrial / Commercial	Blue	40
Eligible for Traffic Calming	Collector	Purple	231
	Residential	Grey	1,183



DIAGNOSIS PHASE

Data Verification of the problem:

- A. Excessive speed
- B. Excessive cut-through traffic

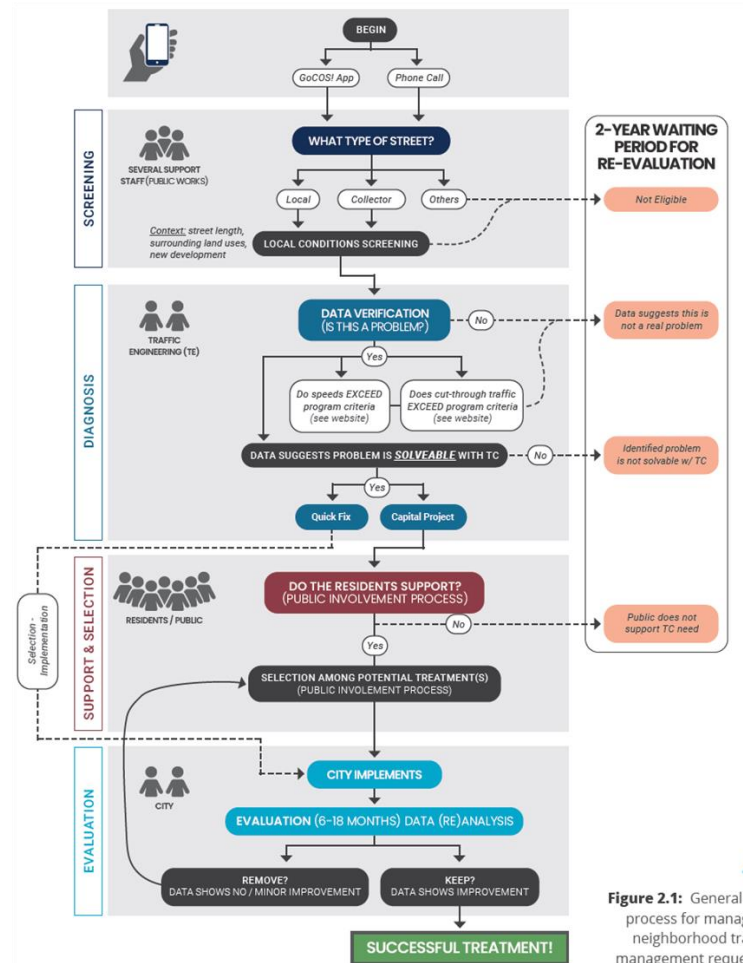
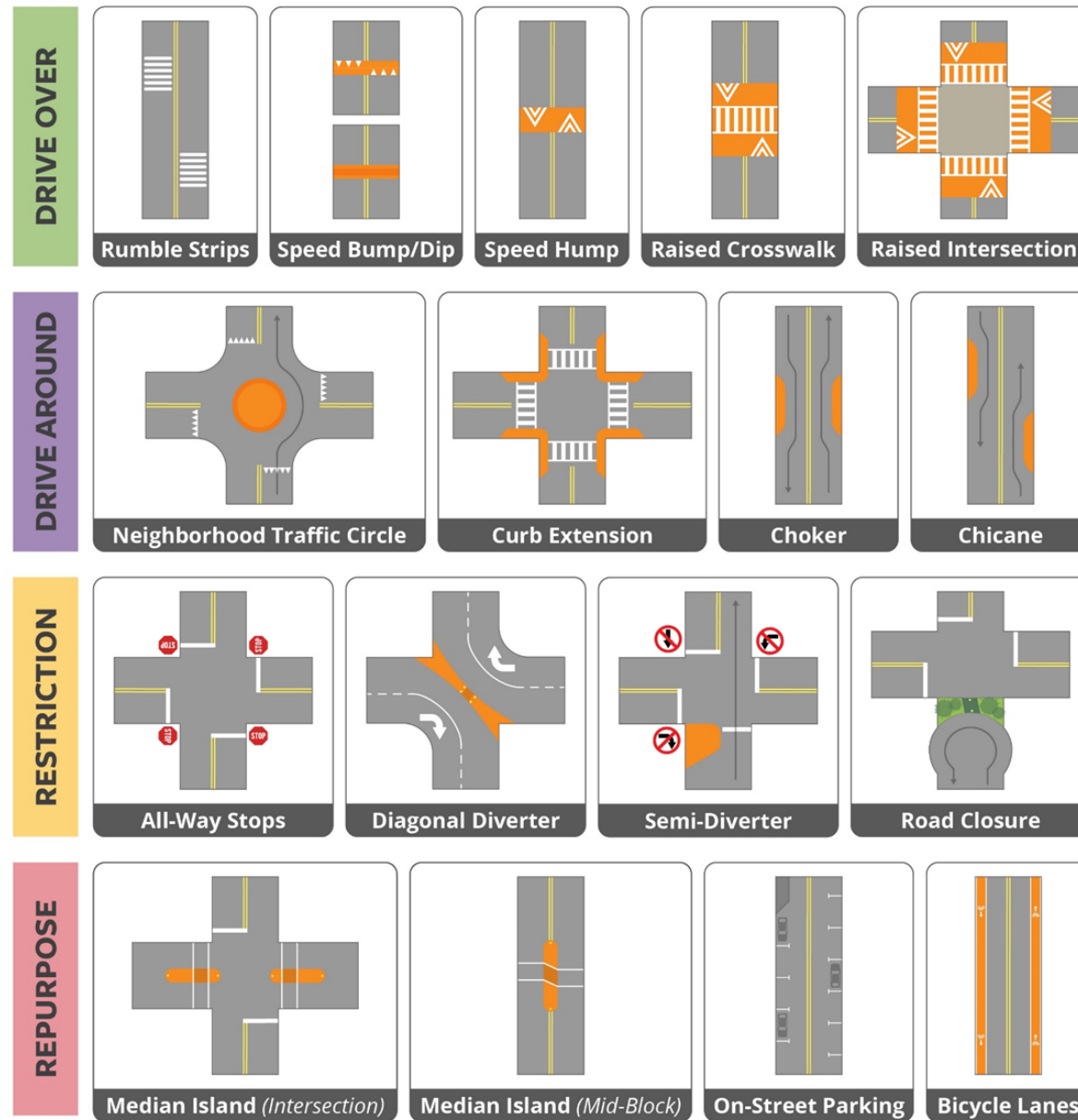


Figure 2.1: Generalized process for managing neighborhood traffic management requests.

Potential Traffic Calming Treatments

- Toolbox of contextual applications





Valley Hi Public Meeting

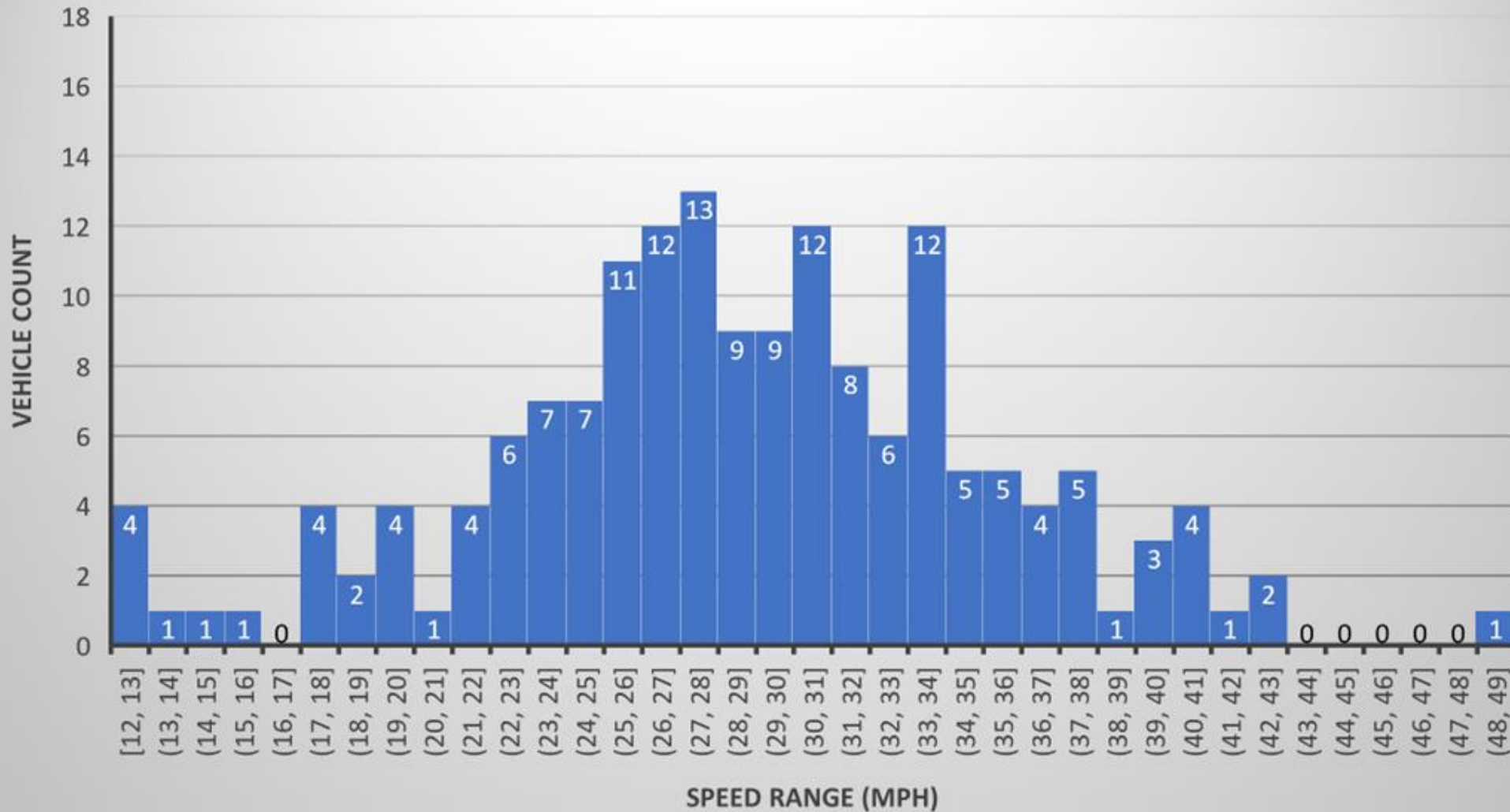
Data Table:

Location	50 th Percentile Speed (mph)		85 th Percentile Speed (mph)		Daily Volume		% of vehicles 10+ mph over speed limit		Maximum speed observed (mph)	
	EB	WB	EB	WB	EB	WB	EB	WB	EB	WB
3102 Valley Hi, 24h 1/24/2024	26	28	34	34	156	121	13%	13%	41	41
2830 Valley Hi, 24h 1/24/2024	29	31	35	39	165	123	19%	28%	49	61
2819 Valley Hi, 24h 1/24/2024	26	26	31	31	160	125	4%	11%	40	42

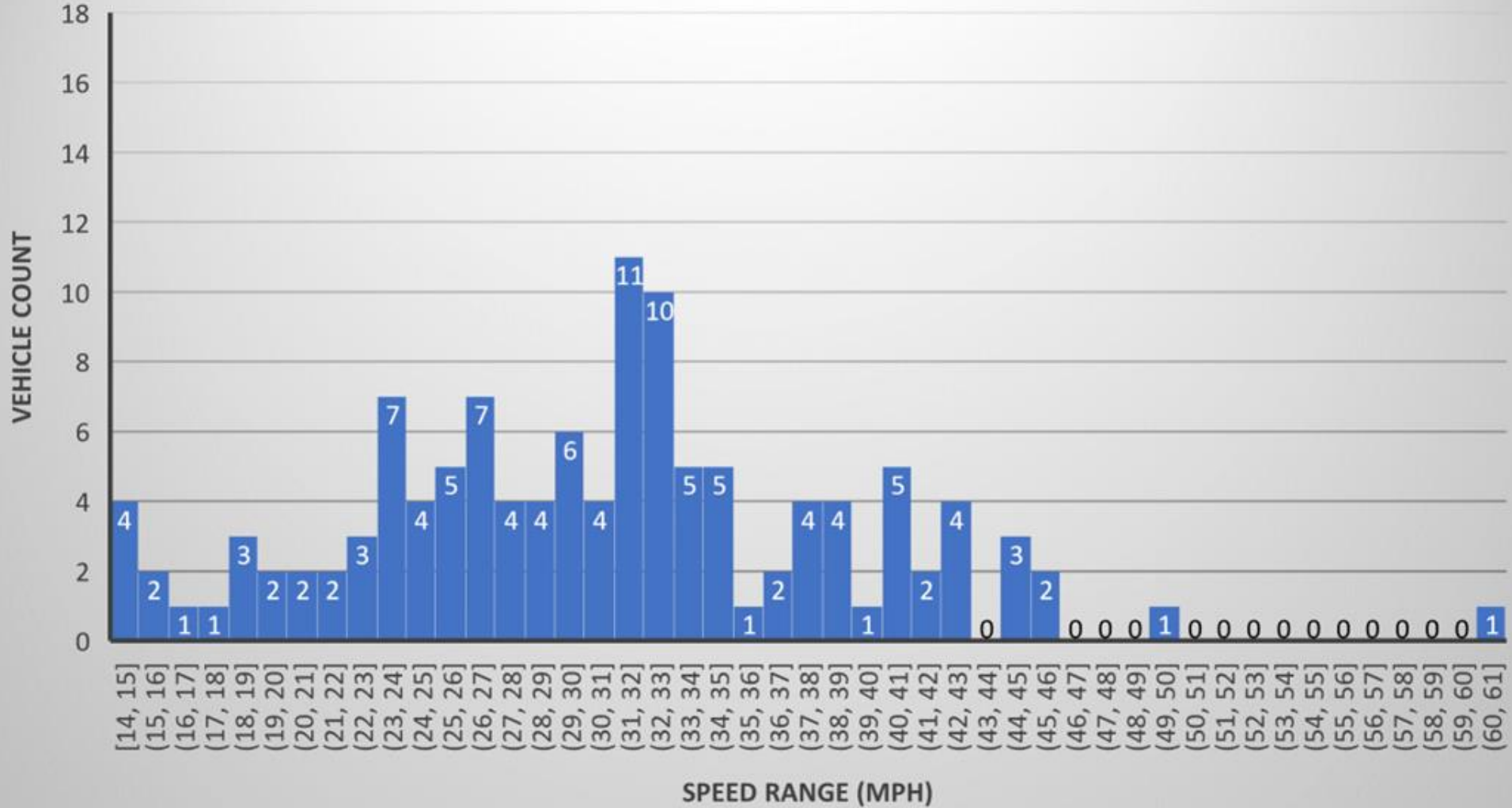


Valley Hi Public Meeting

2830 Valley Hi, EB: 24h Capture - 1/24/2024



2830 Valley Hi, WB: 24h Capture - 1/24/2024



ROADWAY RECOMMENDATION



Q & A



If preferred, please feel free to reach me at:

Theresa.Randall@coloradosprings.gov

